

Scope: Self-supporting double skin metal faced insulating polyisocyanurate (PIR) sandwich panel, intended for discontinuous laying in external walls and wall cladding.

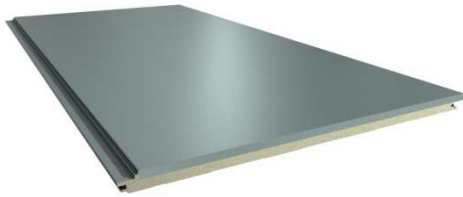
Skin metal faces properties (steel):

Characteristic	Standard ref.
Dimensional tolerance	EN 10143
Steel	EN 10346
Organic coating	EN 10169

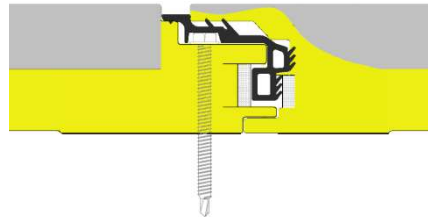
Physical characteristics			
Weight (kg/m ²)	Cover width of the panel (mm)		
	600	900	1000
Ext/Int Thickness: 0,75/0,50 mm		13,30	13,37
		13,49	

Geometrical characteristics:

3D Panel

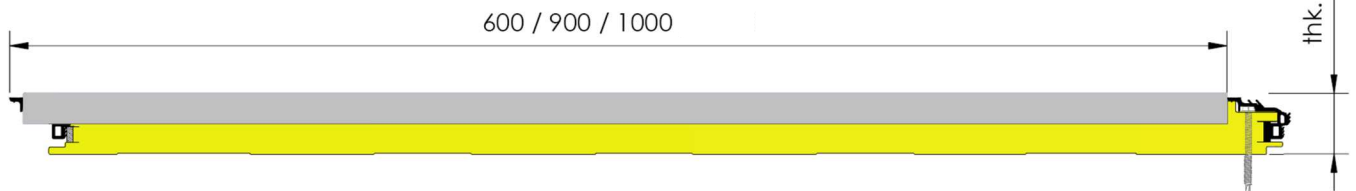


Longitudinal joint



EN 14509:2013

Cross-section



Production characteristics (mm):

Thickness	Total width	Cover width	External thickness		Internal Thickness		Minimum Length		Recommended Maximum length
			Max.	Min.	Max.	Min.	Production	Cut	
50	640	600	0,75	0,70	0,60	0,50	1.000	100	6000
	940	900							
	1040	1.000							

Hoisting facilities during the off-loading and installation, depending on the panel length, must be pre-established.

Declared performances:

Essential characteristic	Standard	Unit	Performance	Comments
Tensile strength perpendicular to faces	EN 1607	Mpa	0,12	
Shear strength	EN 14509	Mpa	0,19	
Shear strength after long-term loading	EN 14509	Mpa	NPD	
Shear modulus (core)	EN 14509	Mpa	4,18	
Compressive strength (core)	EN 826	Mpa	0,21	
External fire performance	ENV 1187	-	NPD	
Reaction to fire	EN 13501 - 1	-	B-s1,d0	
Fire resistance	-	-	NPD	
Water permeability	EN 12865	-	NPD	
Air permeability (+ / -)	EN 12114	m ³ /h*m ²	NPD	
Water vapour permeability	EN 14509	Mpa	NPD	
Airborne sound insulation	EN ISO 717 - 1	dB	NPD	
Sound absorption	-	-	NPD	
Durability (DUR 1)	EN1607	-	Pass	Very light colours: Reflectivity 75-90
Nominal density	-	Kg/m ³	50	
Dimensional tolerances	EN 14509	-	-	According to table 4

Thermal transmittance:

Cover width (mm)	600	900	1.000
U (W/m ² *K)	0,60 ⁽¹⁾	0,56 ⁽¹⁾	0,55 ⁽¹⁾

⁽¹⁾ Test value.

Permissible span:
- Single span:

Maximum permissible span (m):

C. Width (mm):	Colour ⁽⁴⁾ :	Positive loads (daN/m ²):							Negative loads ⁽⁵⁾ (daN/m ²):						
		50	75	100	125	150	175	200	50	75	100	125	150	175	200
600	I-Very light	4,30	3,60	3,20	2,90	2,60	2,40	2,30	4,30	3,60	3,20	2,90	2,60	2,40	2,30
	II-Light	3,60	3,60	3,20	2,90	2,60	2,40	2,30	3,60	3,60	3,20	2,90	2,60	2,40	2,30
	III-Dark	2,70	2,70	2,70	2,70	2,60	2,40	2,30	2,70	2,70	2,70	2,70	2,60	2,40	2,30
900	I-Very light	4,30	3,60	3,20	2,90	2,60	2,40	2,30	4,30	3,60	3,20	2,90	2,60	2,40	2,30
	II-Light	3,60	3,60	3,20	2,90	2,60	2,40	2,30	3,60	3,60	3,20	2,90	2,60	2,40	2,30
	III-Dark	2,70	2,70	2,70	2,70	2,60	2,40	2,30	2,70	2,70	2,70	2,70	2,60	2,40	2,30
1.000	I-Very light	4,30	3,60	3,20	2,90	2,60	2,40	2,30	4,30	3,60	3,20	2,90	2,60	2,40	2,30
	II-Light	3,60	3,60	3,20	2,90	2,60	2,40	2,30	3,60	3,60	3,20	2,90	2,60	2,40	2,30
	III-Dark	2,70	2,70	2,70	2,70	2,60	2,40	2,30	2,70	2,70	2,70	2,70	2,60	2,40	2,30

- Double span:

Maximum permissible span (m):

C. Width (mm):	Colour ⁽⁴⁾ :	Positive loads (daN/m ²):							Negative loads ⁽⁵⁾ (daN/m ²):						
		50	75	100	125	150	175	200	50	75	100	125	150	175	200
600	I-Very light	4,50	4,50	3,90	3,50	3,10	2,80	2,60	4,50	4,50	3,90	3,50	3,10	2,80	2,60
	II-Light	4,50	4,50	3,90	3,50	3,10	2,80	2,60	4,50	4,50	3,90	3,50	3,10	2,80	2,60
	III-Dark	4,50	4,50	3,90	3,50	3,10	2,80	2,60	4,50	4,50	3,90	3,50	3,10	2,80	2,60
900	I-Very light	4,50	4,50	3,90	3,50	3,10	2,80	2,60	4,50	4,50	3,90	3,50	3,10	2,80	2,60
	II-Light	4,50	4,50	3,90	3,50	3,10	2,80	2,60	4,50	4,50	3,90	3,50	3,10	2,80	2,60
	III-Dark	4,50	4,50	3,90	3,50	3,10	2,80	2,60	4,50	4,50	3,90	3,50	3,10	2,80	2,60
1.000	I-Very light	4,50	4,50	3,90	3,50	3,10	2,80	2,60	4,50	4,50	3,90	3,50	3,10	2,80	2,60
	II-Light	4,50	4,50	3,90	3,50	3,10	2,80	2,60	4,50	4,50	3,90	3,50	3,10	2,80	2,60
	III-Dark	4,50	4,50	3,90	3,50	3,10	2,80	2,60	4,50	4,50	3,90	3,50	3,10	2,80	2,60

- Triple span:

Maximum permissible span (m):

C. Width (mm):	Colour ⁽⁴⁾ :	Positive loads (daN/m ²):							Negative loads ⁽⁵⁾ (daN/m ²):						
		50	75	100	125	150	175	200	50	75	100	125	150	175	200
600	I-Very light	4,50	4,30	3,80	3,40	3,00	2,80	2,60	4,50	4,30	3,80	3,40	3,00	2,80	2,60
	II-Light	4,50	4,30	3,80	3,40	3,00	2,80	2,60	4,50	4,30	3,80	3,40	3,00	2,80	2,60
	III-Dark	4,50	4,30	3,80	3,40	3,00	2,80	2,60	4,50	4,30	3,80	3,40	3,00	2,80	2,60
900	I-Very light	4,50	4,30	3,80	3,40	3,00	2,80	2,60	4,50	4,30	3,80	3,40	3,00	2,80	2,60
	II-Light	4,50	4,30	3,80	3,40	3,00	2,80	2,60	4,50	4,30	3,80	3,40	3,00	2,80	2,60
	III-Dark	4,50	4,30	3,80	3,40	3,00	2,80	2,60	4,50	4,30	3,80	3,40	3,00	2,80	2,60
1.000	I-Very light	4,50	4,30	3,80	3,40	3,00	2,80	2,60	4,50	4,30	3,80	3,40	3,00	2,80	2,60
	II-Light	4,50	4,30	3,80	3,40	3,00	2,80	2,60	4,50	4,30	3,80	3,40	3,00	2,80	2,60
	III-Dark	4,50	4,30	3,80	3,40	3,00	2,80	2,60	4,50	4,30	3,80	3,40	3,00	2,80	2,60

Notes:

Load factor for variable actions: 1.50

⁽⁴⁾ Colour groups:

 I: Very light colours (RG = 75-90 y T_{amb} = + 55 °C)

 II: Light colours (RG = 40-74 y T_{amb} = + 45 °C)

 III: Dark colours (RG = 8-39 y T_{amb} = + 80 °C)

⁽⁵⁾ Maximum permissible span of the panel. Depending on the fixing type they could be lower.

 For any further clarification, you can contact Technical Department (tecnico@europafil.com or by phone)
 EUROPERFIL, S.A. reserves the right to change this document without notice.