

**SCOPE**

Self-supporting roofing product for discontinuous laying made from metallic coated steel sheet with or without additional organic coatings.

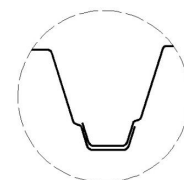
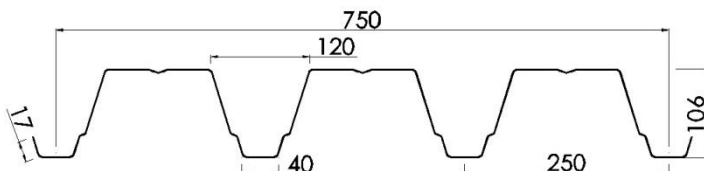
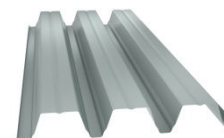
**MATERIAL (Steel)**

CHARACTERISTIC	STAND. REF.	Thickness (mm)				
		0,75	0,80	0,88	1,00	1,20
Weight (kg/m <sup>2</sup> )		9,81	10,47	11,51	13,08	15,70
$I_g$ (cm <sup>4</sup> /m)		179,580	192,227	212,461	242,813	293,399
$W_1$ (cm <sup>3</sup> /m)		27,600	29,543	32,650	37,311	45,077
$W_2$ (cm <sup>3</sup> /m)		43,870	46,962	51,911	59,335	71,715

**GEOMETRICAL CHARACTERISTICS**

CHARACTERISTIC	VALUE	UNIT	TOLERANCE
Depth of profile (h)	106	mm	± 2,0
Depth of stiffeners	5	mm	± 1,0
Pitch	250	mm	± 4,0
Widths of crown and valley (b <sub>1</sub> , b <sub>2</sub> )	(40,130)	mm	+2,0/-1,0
Cover width (w)	0,750	mm	± h/10 (max.: 15 mm)
Radius of bends (r)	6	mm	+ 2,0 / 0,0
Deviation from straightness (δ)	≤ tolerance	mm	2,0 / m (max.: 10,0)
Deviation from squareness (s)	≤ tolerance	mm	≤ 0,5% of (w)
Length (l)	According to order <sup>(1)</sup>	mm	l ≤ 3.000 mm +10,0/-5,0 l > 3.000 mm + 20,0/-5,0
Deviation of side lap (D)	≤ tolerance	mm	± 2,0 on 500 mm
Curve radius and angles	---	°	---
Reaction to fire	Class A1 <sup>(2)</sup> / Class C-s3,d0 <sup>(3)</sup>		
<sup>(1)</sup> Maximum length: 16.990 mm; Minimum length: 1.200 mm			
<sup>(2)</sup> Class A1: According to commission decision 96/603/CE			
<sup>(3)</sup> Class C-s3,d0: According to commission decision 2010/737/UE for Plastisol PVC coating			


 07  
 EN 14782:2006



**OVERLAP DETAIL**

**SECTION DETAIL**

**3D DETAIL**

**EXPERIMENTALS CHARACTERISTICS – Minimal support width 60 mm**

In accordance with tests based on the standard NF P 34-503 controlled by SOCOTEC (DM 7563).

Moments		Thickness (mm)				
		0,75	0,80	0,88	1,00	1,20
Bending M. - Concentrated load (m · daN / m)	MC	352,42	375,91	413,51	469,90	563,87
M. of inertia - Simple beam (cm <sup>4</sup> / m)	I2	183,21	195,42	214,96	244,28	293,14
M. of inertia - Two equal spans (cm <sup>4</sup> / m)	I3	138,52	147,75	162,53	184,70	221,63
M. of inertia - Continuous beam (cm <sup>4</sup> / m)	Im	160,87	171,59	188,75	214,49	257,39
Bending M. - At beam – Sist. Elast. (m · daN / m)	M2T	719,89	767,88	844,67	959,86	1151,82
Bending M. - At beam – Sist. Elast.-Plast. (m · daN / m)	M3T	731,73	780,51	858,56	975,63	1170,77
Bending M. - At support (m · daN / m)	M3A	622,81	664,33	730,76	830,41	996,50

**PERMISSIBLE SPAN (m) – Limitation of deflection: L/200 – Minimal support width 60 mm**

In accordance with French standard NF P 84-206 (DTU 43.3)

Variable actions (kN/m <sup>2</sup> )	Permanent actions (kN/m <sup>2</sup> )										
		Espesor (mm)									
		0,75	0,80	0,88	1,00	1,20	0,75	0,80	0,88	1,00	1,20
1,00	0,15	4,91	5,01	5,13	5,30	5,55	5,66	5,83	6,02	6,28	6,64
	0,20	4,86	4,95	5,10	5,30	5,55	5,55	5,72	5,98	6,28	6,64
	0,25	4,79	4,89	5,04	5,24	5,53	5,46	5,63	5,88	6,24	6,64
1,25	0,15	4,14	4,22	4,35	4,53	4,79	4,43	4,57	4,79	5,08	5,73
	0,25	4,56	4,66	4,81	5,01	5,25	5,15	5,31	5,55	5,83	6,28
	0,25	4,53	4,62	4,76	4,95	5,24	5,00	5,16	5,39	5,72	6,28
1,50	0,15	4,29	4,38	4,53	4,72	5,01	4,76	4,91	5,14	5,46	6,00
	0,25	4,29	4,38	4,53	4,72	5,00	4,64	4,79	5,01	5,32	6,00
	1,20	3,76	3,84	3,95	4,12	4,36	3,83	3,95	4,13	4,40	4,96
1,75	0,15	4,08	4,16	4,30	4,49	4,77	4,45	4,59	4,80	5,10	5,75
	0,25	4,08	4,16	4,30	4,49	4,77	4,35	4,49	4,70	4,99	5,63
2,00	0,15	3,90	3,98	4,11	4,29	4,56	4,19	4,32	4,53	4,81	5,43
	0,25	3,90	3,98	4,11	4,29	4,56	4,11	4,24	4,44	4,72	5,32

Equally spaced supports in continuous beams, with a maximum difference between adjacent span lower than 20%, in accordance with DTU 43.3.

 For any further clarification, you can contact Technical Department ([tecnico@europafil.es](mailto:tecnico@europafil.es) or by phone).  
 EUROPERFIL, S.A. reserves the right to change this document without notice.

**SCOPE**

Self-supporting roofing product for discontinuous laying made from metallic coated steel sheet with or without additional organic coatings.

**MATERIAL (Steel)**

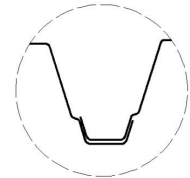
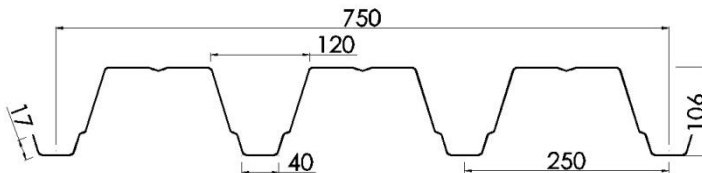
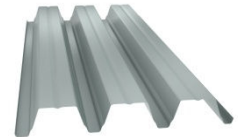
CHARACTERISTIC	STAND. REF.
Dimensional tolerance	EN 10143
Steel	EN 10346
Organic coating	EN 10169

	Thickness (mm)				
	0,75	0,80	0,88	1,00	1,20
Weight (kg/m <sup>2</sup> )	9,81	10,47	11,51	13,08	15,70
I <sub>g</sub> (cm <sup>4</sup> /m)	179,580	192,227	212,461	242,813	293,399
W <sub>1</sub> (cm <sup>3</sup> /m)	27,600	29,543	32,650	37,311	45,077
W <sub>2</sub> (cm <sup>3</sup> /m)	43,870	46,962	51,911	59,335	71,715

**GEOMETRICAL CHARACTERISTICS**

CHARACTERISTIC	VALUE	UNIT	TOLERANCE
Depth of profile (h)	106	mm	± 2,0
Depth of stiffeners	5	mm	± 1,0
Pitch	250	mm	± 4,0
Widths of crown and valley (b <sub>1</sub> ,b <sub>2</sub> )	(40,130)	mm	+2,0/-1,0
Cover width (w)	0,750	mm	± h/10 (max.: 15 mm)
Radius of bends (r)	6	mm	+ 2,0 / 0,0
Deviation from straightness (δ)	≤ tolerance	mm	2,0 / m (max.: 10,0)
Deviation from squareness (s)	≤ tolerance	mm	≤ 0,5% of (w)
Length (l)	According to order <sup>(1)</sup>	mm	l ≤ 3.000 mm +10,0/-5,0 l > 3.000 mm + 20,0/-5,0
Deviation of side lap (D)	≤ tolerance	mm	± 2,0 on 500 mm
Curve radius and angles	---	°	---
Reaction to fire	Class A1 <sup>(2)</sup> / Class C-s3,d0 <sup>(3)</sup>		
<sup>(1)</sup> Maximum length: 16.990 mm; Minimum length: 1.200 mm			
<sup>(2)</sup> Class A1: According to commission decision 96/603/CE			
<sup>(3)</sup> Class C-s3,d0: According to commission decision 2010/737/UE for Plastisol PVC coating			


 07  
 EN 14782:2006



**OVERLAP DETAIL**

**SECTION DETAIL**

**3D DETAIL**

**EXPERIMENTALS CHARACTERISTICS – Minimal support width 120 mm**

In accordance with tests based on the standard NF P 34-503 controlled by SOCOTEC (DM 7563).

		Thickness (mm)				
		0,75	0,80	0,88	1,00	1,20
<b>Moments</b>						
Bending M. - Concentrated load (m · daN / m)	MC	352,42	375,91	413,51	469,90	563,87
M. of inertia - Simple beam (cm <sup>4</sup> / m)	I2	183,21	195,42	214,96	244,28	293,14
M. of inertia - Two equal spans (cm <sup>4</sup> / m)	I3	150,44	160,47	176,52	200,59	240,70
M. of inertia - Continuous beam (cm <sup>4</sup> / m)	Im	166,83	177,95	195,74	222,43	266,92
Bending M. – At beam – Sist. Elast. (m · daN / m)	M2T	757,98	808,51	889,37	1010,64	1212,77
Bending M. – At beam – Sist. Elast.-Plast. (m · daN / m)	M3T	784,31	836,60	920,26	1045,75	1254,90
Bending M. – At support (m · daN / m)	M3A	686,83	732,62	805,88	915,77	1098,93

**PERMISSIBLE SPAN (m) – Limitation of deflection: L/200 – Minimal support width 120 mm**

In accordance with French standard NF P 84-206 (DTU 43.3)

Variable actions (kN/m <sup>2</sup> )	Permanent actions (kN/m <sup>2</sup> )										
		Espesor (mm)									
		0,75	0,80	0,88	1,00	1,20	0,75	0,80	0,88	1,00	1,20
1,00	0,15	4,91	5,01	5,13	5,30	5,55	5,86	6,00	6,19	6,46	6,86
	0,20	4,86	4,95	5,10	5,30	5,55	5,75	5,93	6,19	6,46	6,86
	0,25	4,79	4,89	5,04	5,24	5,53	5,65	5,82	6,09	6,46	6,86
	1,00	4,14	4,22	4,35	4,53	4,79	4,59	4,73	4,95	5,26	5,73
1,25	0,15	4,56	4,66	4,81	5,01	5,25	5,33	5,50	5,75	6,00	6,37
	0,25	4,53	4,62	4,76	4,95	5,24	5,18	5,34	5,58	5,93	6,37
1,50	0,15	4,29	4,38	4,53	4,72	5,01	4,93	5,09	5,32	5,65	6,00
	0,25	4,29	4,38	4,53	4,72	5,00	4,81	4,96	5,19	5,51	6,00
	1,20	3,76	3,84	3,95	4,12	4,36	3,96	4,09	4,28	4,55	4,96
1,75	0,15	4,08	4,16	4,30	4,49	4,77	4,61	4,75	4,97	5,28	5,70
	0,25	4,08	4,16	4,30	4,49	4,77	4,51	4,65	4,86	5,17	5,63
2,00	0,15	3,90	3,98	4,11	4,29	4,56	4,34	4,48	4,69	4,98	5,43
	0,25	3,90	3,98	4,11	4,29	4,56	4,26	4,39	4,59	4,88	5,32

Equally spaced supports in continuous beams, with a maximum difference between adjacent span lower than 20%, in accordance with DTU 43.3.

 For any further clarification, you can contact Technical Department ([tecnico@europafil.es](mailto:tecnico@europafil.es) or by phone).  
 EUROPERFIL, S.A. reserves the right to change this document without notice.

**SCOPE**

Self-supporting roofing product for discontinuous laying made from metallic coated steel sheet with or without additional organic coatings.

**MATERIAL (Steel)**

CHARACTERISTIC	STAND. REF.	Thickness (mm)				
		0,75	0,80	0,88	1,00	1,20
Weight (kg/m <sup>2</sup> )		9,81	10,47	11,51	13,08	15,70
I <sub>g</sub> (cm <sup>4</sup> /m)		179,580	192,227	212,461	242,813	293,399
W <sub>1</sub> (cm <sup>3</sup> /m)		27,600	29,543	32,650	37,311	45,077
W <sub>2</sub> (cm <sup>3</sup> /m)		43,870	46,962	51,911	59,335	71,715

**GEOMETRICAL CHARACTERISTICS**

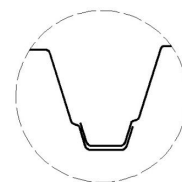
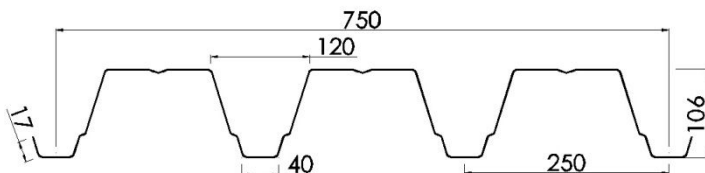
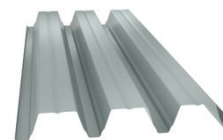
CHARACTERISTIC	VALUE	UNIT	TOLERANCE
Depth of profile (h)	106	mm	± 2,0
Depth of stiffeners	5	mm	± 1,0
Pitch	250	mm	± 4,0
Widths of crown and valley (b <sub>1</sub> , b <sub>2</sub> )	(40,130)	mm	+2,0/-1,0
Cover width (w)	0,750	mm	± h/10 (max.: 15 mm)
Radius of bends (r)	6	mm	+ 2,0 / 0,0
Deviation from straightness (δ)	≤ tolerance	mm	2,0 / m (max.: 10,0)
Deviation from squareness (s)	≤ tolerance	mm	≤ 0,5% of (w)
Length (l)	According to order <sup>(1)</sup>	mm	l ≤ 3.000 mm +10,0/-5,0 l > 3.000 mm + 20,0/-5,0
Deviation of side lap (D)	≤ tolerance	mm	± 2,0 on 500 mm
Curve radius and angles	---	°	---
Reaction to fire	Class A1 <sup>(2)</sup> / Class C-s3,d0 <sup>(3)</sup>		

<sup>(1)</sup> Maximum length: 16.990 mm; Minimum length: 1.200 mm

<sup>(2)</sup> Class A1: According to commission decision 96/603/CE

<sup>(3)</sup> Class C-s3,d0: According to commission decision 2010/737/UE for Plastisol PVC coating

 07  
 EN 14782:2006



**OVERLAP DETAIL**

**SECTION DETAIL**

**3D DETAIL**

**EXPERIMENTALS CHARACTERISTICS – Minimal support width 160 mm**

In accordance with tests based on the standard NF P 34-503 controlled by SOCOTEC (DM 7563).

Moments		Thickness (mm)				
		0,75	0,80	0,88	1,00	1,20
Bending M. - Concentrated load (m · daN / m)	MC	352,42	375,91	413,51	469,90	563,87
M. of inertia - Simple beam (cm <sup>4</sup> / m)	I2	201,86	215,32	236,85	269,15	322,98
M. of inertia - Two equal spans (cm <sup>4</sup> / m)	I3	158,13	168,67	185,53	210,83	253,01
M. of inertia - Continuous beam (cm <sup>4</sup> / m)	Im	179,99	191,99	211,19	239,99	287,98
Bending M. - At beam – Sist. Elast. (m · daN / m)	M2T	757,98	808,51	889,37	1010,64	1212,77
Bending M. - At beam – Sist. Elast.-Plast. (m · daN / m)	M3T	825,75	880,80	968,88	1101,00	1321,20
Bending M. - At support (m · daN / m)	M3A	727,80	776,32	853,95	970,40	1164,48

**PERMISSIBLE SPAN (m) – Limitation of deflection: L/200 – Minimal support width 160 mm**

In accordance with French standard NF P 84-206 (DTU 43.3)

Variable actions (kN/m <sup>2</sup> )	Permanent actions (kN/m <sup>2</sup> )										
		Espesor (mm)									
		0,75	0,80	0,88	1,00	1,20	0,75	0,80	0,88	1,00	1,20
1,00	0,15	5,05	5,14	5,26	5,43	5,68	5,97	6,10	6,29	6,57	6,98
	0,20	5,01	5,12	5,26	5,43	5,68	5,90	6,08	6,29	6,57	6,98
	0,25	4,95	5,05	5,20	5,41	5,68	5,80	5,98	6,25	6,57	6,98
	1,00	4,27	4,36	4,49	4,68	4,95	4,71	4,86	5,08	5,40	5,88
1,25	0,15	4,71	4,81	4,97	5,14	5,38	5,47	5,64	5,84	6,10	6,48
	0,25	4,68	4,77	4,92	5,12	5,38	5,31	5,48	5,73	6,08	6,48
1,50	0,15	4,43	4,53	4,67	4,88	5,14	5,06	5,22	5,46	5,74	6,10
	0,25	4,43	4,53	4,67	4,88	5,14	4,93	5,09	5,32	5,65	6,10
	1,20	3,88	3,96	4,08	4,25	4,51	4,07	4,19	4,39	4,67	5,09
1,75	0,15	4,21	4,30	4,44	4,63	4,92	4,73	4,88	5,10	5,42	5,79
	0,25	4,21	4,30	4,44	4,63	4,92	4,62	4,77	4,99	5,30	5,78
2,00	0,15	4,03	4,11	4,25	4,43	4,71	4,45	4,59	4,81	5,11	5,57
	0,25	4,03	4,11	4,25	4,43	4,71	4,37	4,50	4,71	5,01	5,46

Equally spaced supports in continuous beams, with a maximum difference between adjacent span lower than 20%, in accordance with DTU 43.3.

 For any further clarification, you can contact Technical Department ([tecnico@europerfil.es](mailto:tecnico@europerfil.es) or by phone).  
 EUROPERFIL, S.A. reserves the right to change this document without notice.